

聚合物基质正相色谱柱

■ 特点

NH2P-50

- 适用于糖类的正相分析
- 聚合物填料具有良好的化学稳定性,性能不会因使用时间长而降低
- 能用碱性溶剂冲洗
- 适用的pH值范围大 (pH值2~13)

Note book No.2

News No.10, 13, 15

DC-613

- 适用于糖类的正相分析
- 适用的pH值范围大 (pH值2~14)

也可参阅第6页上的“正相色谱柱和反相色谱柱的填料特点和应用”

■ 标准柱

订货号	产品名称	塔板数 (TP/column)	键合相	基质	粒径 (μm)	孔径 (Å)	规格 I.D. x L (mm)	储存溶剂
F7630002	Asahipak NH2P-50 4D	≥ 5,500	氨基	聚乙烯醇	5	100	4.6 x 150	H ₂ O/CH ₃ CN=25/75
F7630001	Asahipak NH2P-50 4E	≥ 7,500	氨基	聚乙烯醇	5	100	4.6 x 250	H ₂ O/CH ₃ CN=25/75
F6710016	Asahipak NH2P-50G 4A	(保护柱)	氨基	聚乙烯醇	5	—	4.6 x 10	H ₂ O/CH ₃ CN=25/75
F7630006	Asahipak NH2P-50 2D	≥ 3,500	氨基	聚乙烯醇	5	100	2.0 x 150	H ₂ O/CH ₃ CN=25/75
F6713000	Asahipak NH2P-50G 2A	(保护柱)	氨基	聚乙烯醇	5	—	2.0 x 10	H ₂ O/CH ₃ CN=25/75
F6710100	Asahipak NH2P-50 LF	(过滤)	氨基	聚乙烯醇	—	—	8.0 x 75	H ₂ O/CH ₃ CN=25/75
F7001003	RSpak DC-613	≥ 5,500	磺基 (Na ⁺)	苯乙烯-二乙烯基苯共聚物	6	100	6.0 x 150	H ₂ O/CH ₃ CN=30/70
F6700170	RSpak DC-G	(保护柱)	磺基 (Na ⁺)	苯乙烯-二乙烯基苯共聚物	10	—	4.6 x 10	H ₂ O/CH ₃ CN=30/70

*NH2P-50半微柱与微柱请参阅第64页。

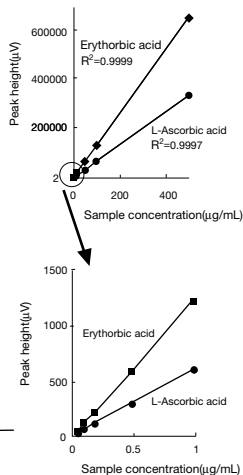
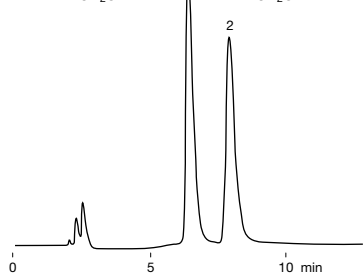
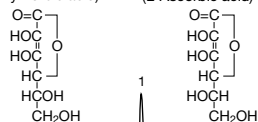
*NH2P-50和DC-613制备柱请参阅第77页。

*若需定制,请联系Shodex或就近联系我们的经销商。

抗坏血酸和异抗坏血酸

样品: 5µg/mL each, 10µg

- 1. 异抗坏血酸 (Erythorbic acid)
- 2. 抗坏血酸 (L-Ascorbic acid)

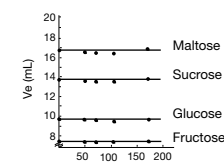
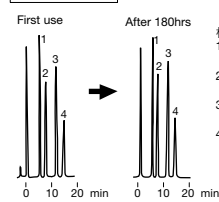


Column : Shodex Asahipak NH2P-50 4E
 Eluent : 20mM NaH₂PO₄ + 30mM H₃PO₄(pH2.2)/CH₃CN=20/80
 Flow rate : 1.0mL/min
 Detector : UV(254nm)
 Column temp. : 30°C

NH2P-50柱和硅胶氨基填充柱的可重现性

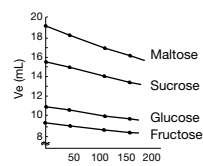
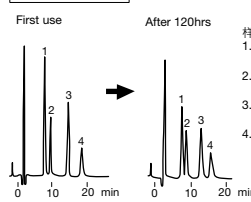
对每种糖类的分析, NH2P-50聚合物氨基填充柱都能防止使用时间长而导致的性能降低, 因此能够保持稳定的保留时间并获得尖锐峰形。

NH2P-50 4E



Column : Shodex Asahipak NH2P-50 4E, Silica-based amino column
 Eluent : H₂O/CH₃CN=25/75
 Flow rate : 1.0mL/min
 Detector : RI
 Column temp. : 30°C

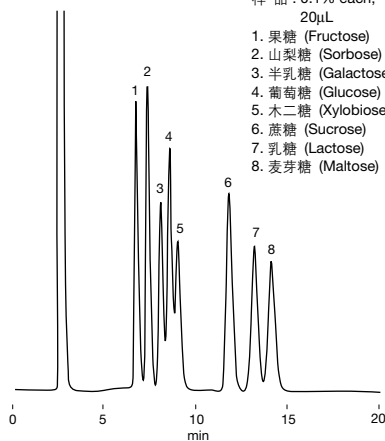
硅基系的氨基柱



糖标准品的分离

样品: 0.1% each, 20µL

- 果糖 (Fructose)
- 山梨糖 (Sorbitose)
- 半乳糖 (Galactose)
- 葡萄糖 (Glucose)
- 木二糖 (Xylobiose)
- 蔗糖 (Sucrose)
- 乳糖 (Lactose)
- 麦芽糖 (Maltose)

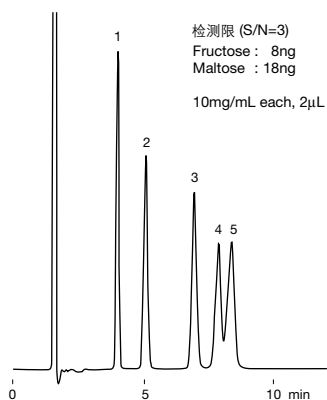


Column : Shodex Asahipak NH2P-50 4E
 Eluent : H₂O/CH₃CN=25/75
 Flow rate : 1.0mL/min
 Detector : RI
 Column temp. : 30°C

采用半微柱对糖类的高灵敏度分析

NH2P-50 2D (2.0mm I.D. x 150mm)

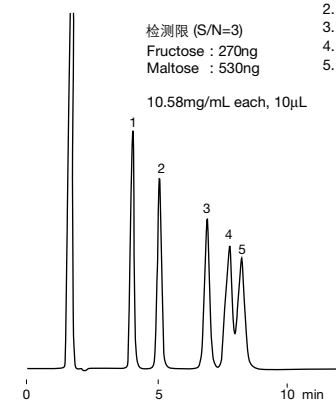
检测限 (S/N=3)
 Fructose : 8ng
 Maltose : 18ng
 10mg/mL each, 2µL



Column : Shodex Asahipak NH2P-50 2D
 Eluent : H₂O/CH₃CN=25/75
 Flow rate : 0.2mL/min
 Detector : RI (small cell volume)
 Column temp. : 25°C

NH2P-50 4D (4.6mm I.D. x 150mm)

检测限 (S/N=3)
 Fructose : 270ng
 Maltose : 530ng
 10.58mg/mL each, 10µL

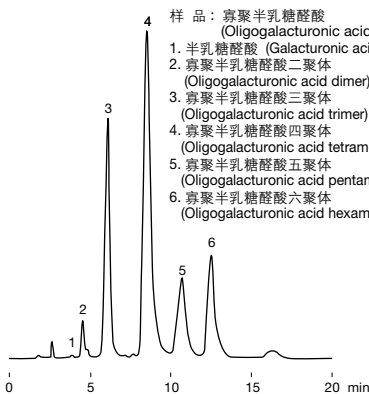


Column : Shodex Asahipak NH2P-50 4D
 Eluent : H₂O/CH₃CN=25/75
 Flow rate : 1.0mL/min
 Detector : RI (conventional type)
 Column temp. : 25°C

寡聚半乳糖醛酸

Sample offered by Prof. Yoshino in Kyoto Women's Univ.

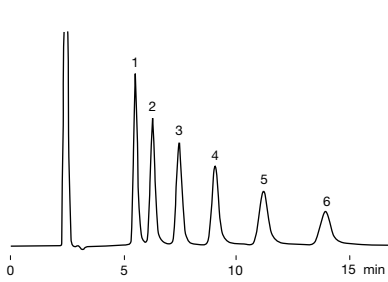
- 样品: 寡聚半乳糖醛酸 (Oligogalacturonic acids)
- 半乳糖醛酸 (Galacturonic acid)
 - 寡聚半乳糖醛酸二聚体 (Oligogalacturonic acid dimer)
 - 寡聚半乳糖醛酸三聚体 (Oligogalacturonic acid trimer)
 - 寡聚半乳糖醛酸四聚体 (Oligogalacturonic acid tetramer)
 - 寡聚半乳糖醛酸五聚体 (Oligogalacturonic acid pentamer)
 - 寡聚半乳糖醛酸六聚体 (Oligogalacturonic acid hexamer)



Column : Shodex Asahipak NH2P-50 4E
 Eluent : 0.3M Sodium phosphate buffer(pH4.4)
 Flow rate : 1.0mL/min
 Detector : UV(210nm)
 Column temp. : 40°C

壳寡糖

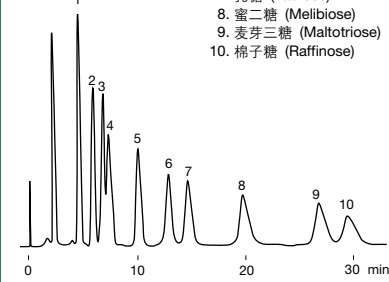
- 样品: 壳寡糖 (Chitooligosaccharides) 2%, 20µL
- D-氨基葡萄糖 (D-Glucosamine)
 - 壳二糖盐酸盐 (Chitobiose hydrochloride)
 - 壳三糖盐酸盐 (Chitotriose hydrochloride)
 - 壳四糖盐酸盐 (Chitotetraose hydrochloride)
 - 壳五糖盐酸盐 (Chitopentaose hydrochloride)
 - 壳六糖盐酸盐 (Chitohexaose hydrochloride)



Column : Shodex Asahipak NH2P-50 4E
 Eluent : H₂O/CH₃CN=30/70
 Flow rate : 1.0mL/min
 Detector : RI
 Column temp. : 25°C

糖类

- 样品: 2.5% each, 15µL
- 木二糖 (Xylose)
 - 果糖 (Fructose)
 - 葡萄糖 (Glucose)
 - 半乳糖 (Galactose)
 - 蔗糖 (Sucrose)
 - 麦芽糖 (Maltose)
 - 乳糖 (Lactose)
 - 蜜二糖 (Melibiose)
 - 麦芽三糖 (Maltotriose)
 - 棉子糖 (Raffinose)



Column : Shodex RSPak DC-613
 Eluent : H₂O/CH₃CN=20/80
 Flow rate : 1.5mL/min
 Detector : RI
 Column temp. : 70°C